

Aktuelles zur International Classification for Health Interventions (ICHI) der WHO

Symposium "Klassifikation, Kodierung und Terminologien – heute und morgen"
GMDS Tagung 2010

Dr. Susanne Hanser, Dr. Albrecht Zaiß,
Universitätsklinikum Freiburg, Medizincontrolling

Ziele

- Ein Werkzeug anbieten, um auf internationaler Ebene Interventionen im Gesundheitswesen zu erfassen, zu analysieren
=> Vergleich, Planung
- Große Bandbreite: ärztliche Leistungen, Rehabilitation, Physiotherapie, Pflege, öffentliche Screening- und Vorbeugeprogramme (public health) u.a.
- Für Länder ohne/mit veralteten Prozedurenklassifikationen
- Mapping auf nationale Klassifikationen wünschenswert

Arbeitsgruppe

- Träger
 - WHO FIC (Family of International Classifications) Network
- Teilnehmer
 - Vertreter von WHO-Kollaborationszentren und Wissenschaftler
 - Mitentwickler der Vorbilderklassifikationen CCI und CCAM
 - Mitentwickler der CCHI (Chinese ...)
 - Vertreter TM (Traditionelle Medizin), Rehabilitation, Physiotherapie, Pflege

Prinzipien

- The classification will describe „What is done to what target, and how“
- Multiaxial, drei Achsen:
 - Target / Ziel(struktur)
 - Action
 - Means
- Links zu/ Kompatibilität mit vorhandenen Klassifikationen und Terminologien
 - Insbesondere: International Classification of Functioning, Disability and Health (ICF)
 - FMA, ATC, GMDN

ICHI Content Model Juli 2010



1. Target

- 1 A Body part or Anatomical site
- 1 B Body Function
- 1 C Activities and Participation
- 1 D Traditional Target (TM)
- 1 F Individual/Population group

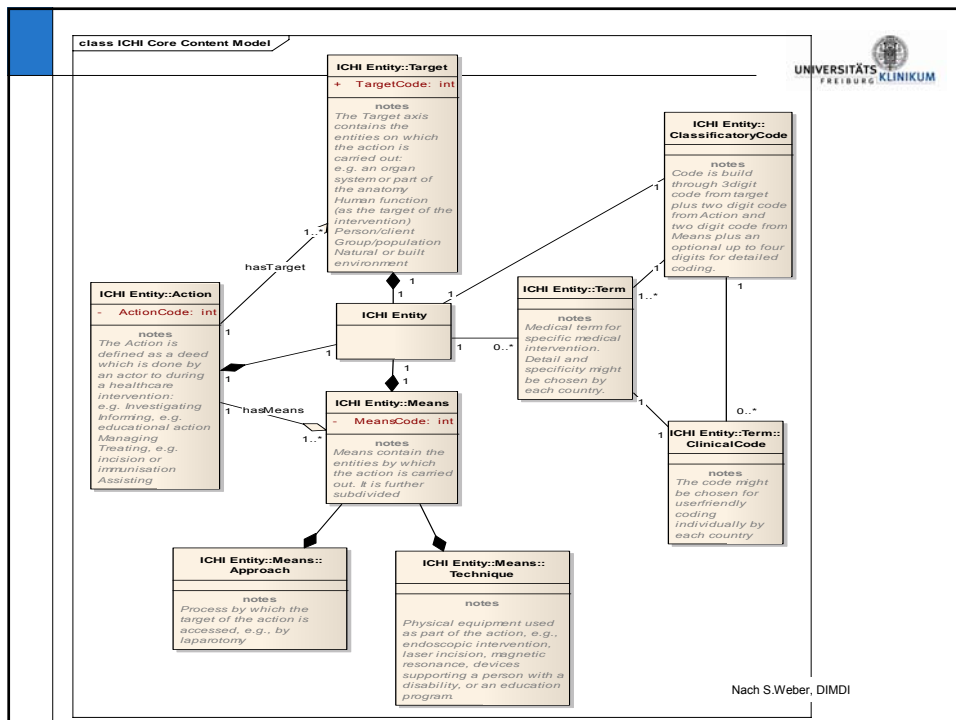
2. Action

- 2 A Informing
- 2 B Investigating
- 2 C Managing
- 2 D Treating
- 2 E Assisting

3. Means

- 3 A Approach
- 3 B Technique
- 3 C Method
- 3 D Device
- 3 E Chemical substance
- 3 F Herbal substance
- 3 G Environment

Nach S.Weber, DIMDI, adaptiert



Inhalte

- Entwicklung der „Value sets“ (Klassen) für die Dokumentation/Kodierung

Actions Displayed by Categories of Investigation, Informing, Managing, Treating, Repairing, Assisting and Preventing

ACTIONS

A. INVESTIGATION

- AA Assessment** –patient, environmental factors, health impact)– evaluating a condition, situation, problem or body function to establish a diagnosis, identify appropriate treatment or monitor response. Includes: analysis, detection, evaluation, examination.
- AB Biopsy** –removal and direct examination or analysis of tissue element from the body. Includes biopsy by endoscopy, punch, percutaneous needle biopsy and superficial smears, incision, or
- AC Measurement** – determining quality, quantity, power, ability, parts, biological elements. Includes: electrophysiological measurement (evoked), measurement, pressure measurement, size measurement, plethysmography. *Excludes:* mapping
- AD Test** – a specific review or examination of body function, proof of movement. Includes: study, psychological testing, apparatus function tests, visual field test, cardiac stress test, conduction study, function study, audiometry
- AE Inspection** –visualization or manual exploration of a body part purposes. Includes: exploration, endoscopy, exploratory laparoscopy
- AF Mapping** – tracing or following pathways of electrical impulses
- AG Screening** to detect disease-risk factors – this may entail a procedure that are not unique. What makes them unique is the

1. TARGET

1.A Anatomical site or physiological function

1.AA NERVOUS SYSTEM

- 1.AAA Brain (Encephalon)
- 1.AAB Intracranial ventricles, meninges and cerebrospinal fluid
- 1.AAC Intracranial, multiple locations or not otherwise specified
- 1.AAD Cranial nerves
- 1.AAE Spinal cord
- 1.AAF Spinal canalis centralis, meninges and cerebrospinal fluid

Entwicklungen 2009/2010

- Seoul 2009:
 - Adaptation Anatomie und Mapping auf FMA (Foundational model of anatomy)
 - Integration der ICF Funktionen als Target
 - Planung: Fertigstellen ICHI Framework in 2010 (Achsen – Value set, Content model)

Entwicklungen 2009/2010

- Freiburg 01/2010 und Köln 03/2010
 - Kommentierung und Revision des „Value set“ (Achsen)
 - Erster Anwendungstest „Mapping exercise“ vereinbart

Mapping exercise: Contributions

Classification	Content	N
ACHI (AUS)	Orthopaedics	100
CCI (CN)	Random selection	100
CCHI (CHINA)	Random selection	75
OPS (D)	Endovascular interventions, radiotherapy	100
NCSP (Scan)	Random selection	100
KTL (D)	Rehabilitation interventions	50
WCPT (USA)	Physiotherapy	257
CCAM (F)	Cardiology	100
CCI/CCAM (CN, F))	Obstetrics	23
ICNP (USA)	Nursing practise	278
		Σ1183

Entwicklungen 2009/2010

- Leiden 07/2010
 - Ergebnisse des Mapping exercise:
 - Gute Anwendbarkeit für Diagnostik und (ärztliche) Therapie
 - Erweiterung des „Value sets“ nötig für andere Bereiche
 - Target: TM, Activities & Participation
 - Means: Substances, Diagnostic tests
 - Bedarf an Definitionen und Verschlagwortung
- Erste Kodier- und Redaktionelle Regeln

Entwicklungen 2009/2010: Diskussionen

- Wann ist das Value set differenziert genug?
- Sämtliche möglichen Methoden als „Means“ abbilden?
 - Devices, Medikamente, ICF Products & Technology ?
 - „The classification will not survive if it has continually to be updated“ (Protokoll Seoul meeting)
- Was ist ...
 - Ziel(struktur) bei Schulung eines Diabetikers?
 - Ziel(struktur) bei einer Entbindung (Fetus, Uterus?)
 - Untersuchungsmaterial (z.B. Urin, Liquor) bei einer Laboruntersuchung: Ziel(struktur), Means (Methode/Technik) oder etwas anderes?

Ausblick

- WHO-FIC Network Meeting, Toronto:
 - Vorstellung des erweiterten Content Models
 - Demo *Sample classification*: Abbildung ICD-9-CM Kapitel 7

- Nächste Phasen nach *Project Plan v. 2.1* vom Juli 2010
 - Alphaversion (2010/2011)
 - Final Version 2014

ICD-9-CM: 7. OPERATIONS ON THE CARDIOVASCULAR SYSTEM (35-39)

- 35.2 Replacement of heart valve
 Includes: excision of heart valve with replacement
 Code also cardiopulmonary bypass [extracorporeal circulation] [heart-lung machine] (39.61)
 Excludes: that associated with repair of:
 endocardial cushion defect (35.54, 35.63, 35.73)
 valvular defect associated with atrial and ventricular septal defects (35.54, 35.63, 35.73)
- 35.20 Replacement of unspecified heart valve
 Repair of unspecified heart valve with tissue graft or prosthetic implant
- 35.21 Replacement of aortic valve with tissue graft
 Repair of aortic valve with tissue graft (autograft) (heterograft) (homograft)
- 35.22 Other replacement of aortic valve
 Repair of aortic valve with replacement:
 NOS
 prosthetic (partial) (synthetic) (total)
- 35.23 Replacement of mitral valve with tissue graft
 Repair of mitral valve with tissue graft (autograft) (heterograft) (homograft)
- 35.24 Other replacement of mitral valve
 Repair of mitral valve with replacement:
 NOS
 prosthetic (partial) (synthetic) (total)
- 35.25 Replacement of pulmonary valve with tissue graft
 Repair of pulmonary valve with tissue graft (autograft) (heterograft) (homograft)
- 35.26 Other replacement of pulmonary valve
 Repair of pulmonary valve with replacement:
 NOS
 prosthetic (partial) (synthetic) (total)
- 35.27 Replacement of tricuspid valve with tissue graft
 Repair of tricuspid valve with tissue graft (autograft) (heterograft) (homograft)
- 35.28 Other replacement of tricuspid valve

Mapping

No.	ICD-9-CM Vol 3: heart & coronary vessels		ICHI code number					Codes (descrip	ICHI-Title
	vention Code	ICD-9-CM Code Title	get	Action	Means				
			Anat		Appr	Techn	Meth		
18	35.21	Replacement of aortic valve with tissue graft	ADE	LF	AA			02	Replacement of aortic valve with tissue gra thoracotomy
19	35.22	Other replacement of aortic valve	ADE	LF	AA			03	Replacement of aortic valve by thoracotom Excl.: with tissue graft
20	35.23	Replacement of mitral valve with tissue graft	ADE	LF	AA			04	Replacement of mitral valve with tissue gra thoracotomy
21	35.24	Other replacement of mitral valve	ADE	LF	AA			05	Replacement of mitral valve by thoracotom Excl.: with tissue graft
22	35.25	Replacement of pulmonary valve with tissue graft	ADE	LF	AA			06	Replacement of pulmonary valve with tissue by thoracotomy
23	35.26	Other replacement of pulmonary valve	ADE	LF	AA			07	Replacement of pulmonary valve by thoracot Excl.: with tissue graft
24	35.27	Replacement of tricuspid valve with tissue graft	ADE	LF	AA			08	Replacement of tricuspid valve with tissue by thoracotomy
25	35.28	Other replacement of tricuspid valve	ADE	LF	AA			09	Replacement of tricuspid valve by thoracot Excl.: with tissue graft

Sample classification: Replacement of heart valve

- ADELFAA Reconstruction of Heart valve by Open approach**
- ADELFAA(01) Replacement of heart valve, open
Repair of unspecified heart valve with tissue graft or prosthetic Implant
- ADELFAA02 Replacement of aortic valve with tissue graft, by thoracotomy
Repair of aortic valve with tissue graft (autograft) (heterograft) (homograft)
- ADELFAA03 Replacement of aortic valve by thoracotomy.
*Excl.: with tissue graft
Repair of aortic valve with replacement: NOS. prosthetic (partial) (synthetic) (total)*
- ADELFAA04 Replacement of mitral valve with tissue graft, by thoracotomy
Repair of mitral valve with tissue graft (autograft) (heterograft) (homograft)
- ADELFAA05 Replacement of mitral valve by thoracotomy.
*Excl.: with tissue graft
Repair of mitral valve with replacement: NOS. prosthetic (partial) (synthetic) (total)*