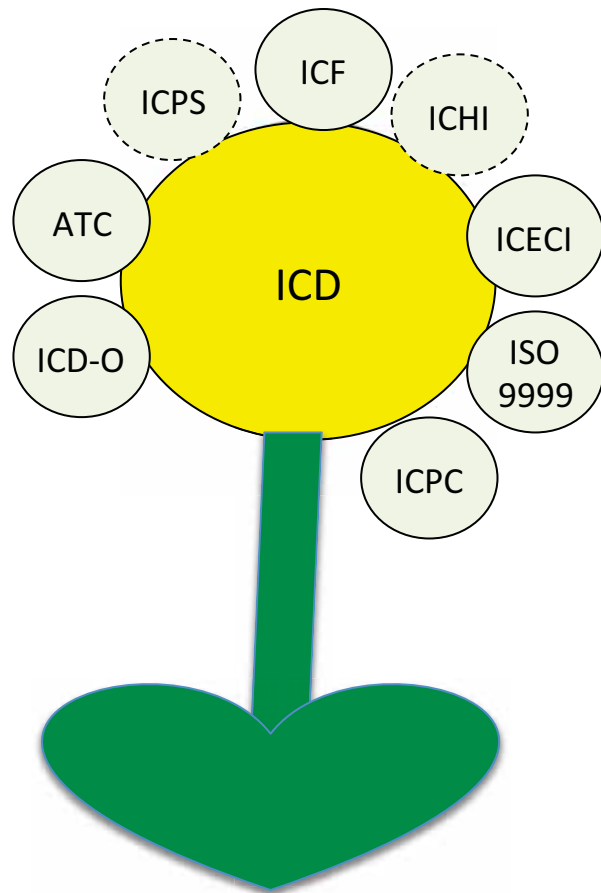


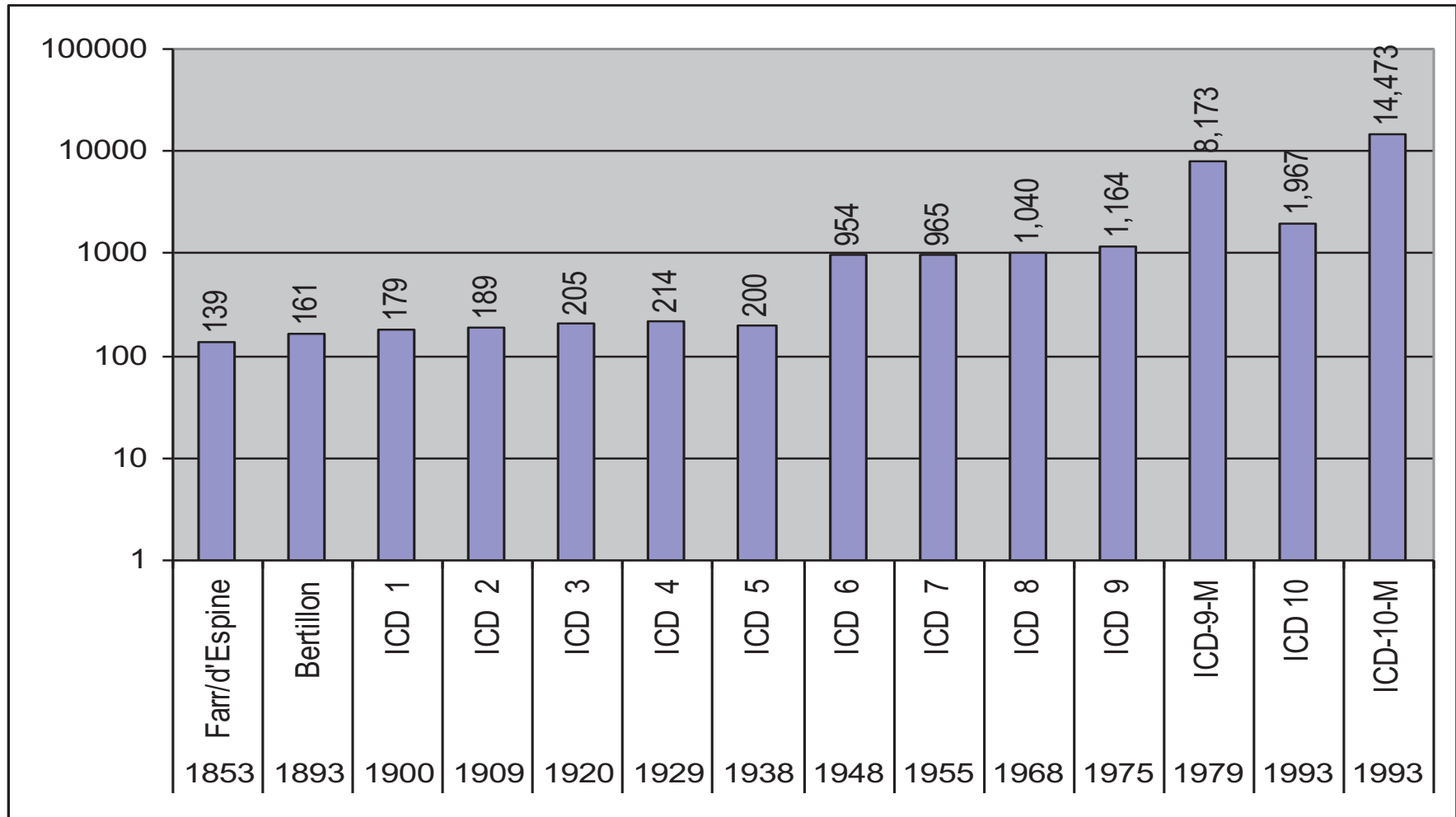
Revision der ICD im Kontext der Internationalen Klassifikationen



R. Jakob, B. Üstün
WHO



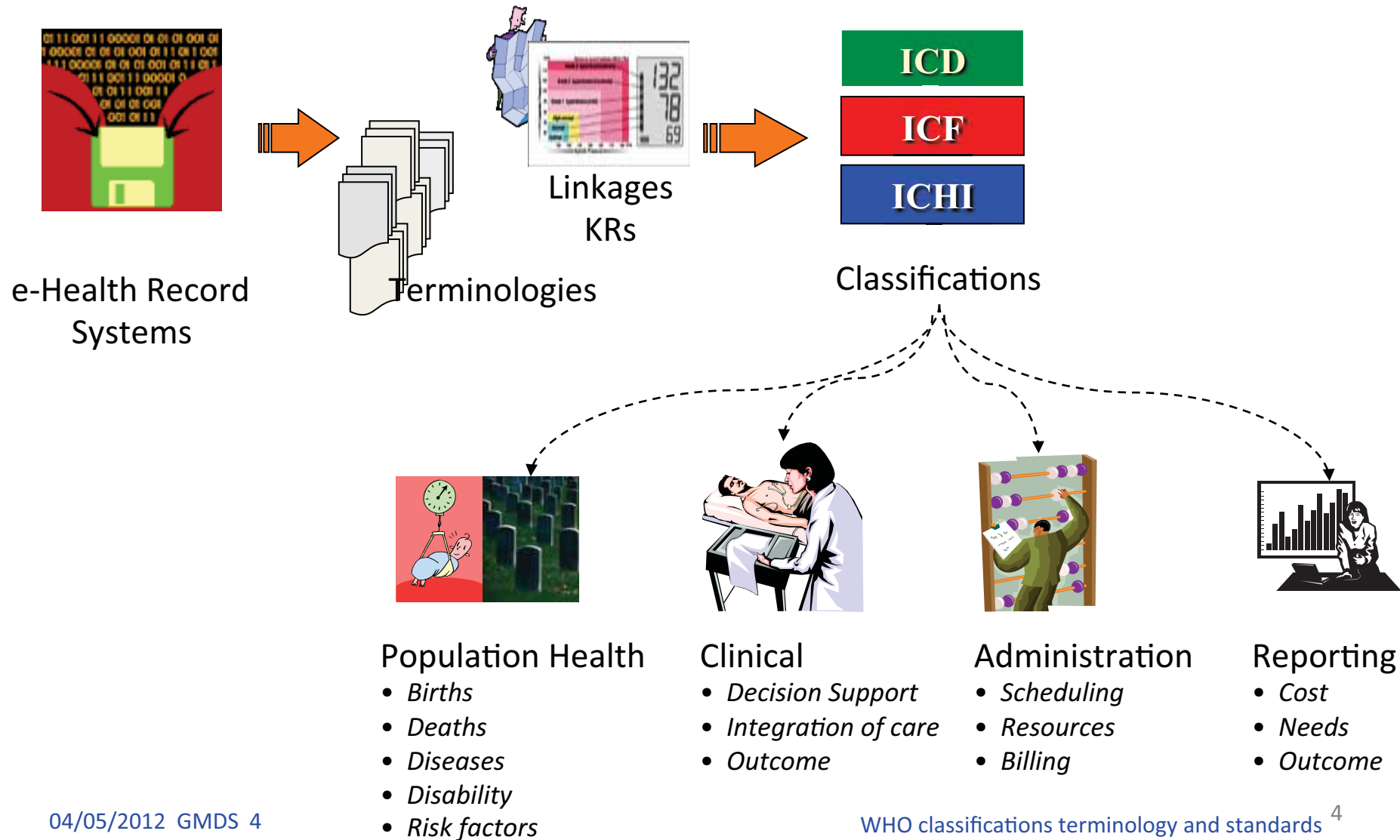
ICD Revisionen



Probleme der ICD-10

1. Driven by **mortality** and **billing** use cases
2. Used in **117 out of 193** countries for official statistics
3. **Limited web presence**
4. **Does not interoperate** with **electronic health records**
5. "Frozen historical accidents"
6. Is just "a laundry list " – **no definitions**

Placing WHO Classifications in HIS & IT



Formulierung der ICD-10:

Revisionsprozess im 20. Jahrhundert



- **8 Annual Revision Conferences**
(1982 - 89)
- **17 – 58 Countries** participated
 - **1- 5 person** delegations
 - mainly **Health Statisticians**
- **Manual** curation
 - List exchange
 - Index was done later
- "Decibel" Method of discussion
- Output: **Paper Copy**
- Work in **English** only
- **Limited testing** in the field

Formulierung der ICD-11: Revisionsprozess im 21. Jahrhundert



- **Internet-based permanent platform**
 - All year round
 - Open to all people in a structured way
 - Content experts focus
- **Digital curation**
 - Wiki enabled collaboration
 - Ontology based
- **Enhanced discussion & peer review**
 - TAGs serve as the editorial group
- **Electronic copy** → print version
- Work in **multiple languages**
- **Planned field tests**
 - Based on Use Cases

Ziele der Revision - ICD-11

1. Entwicklung einer **Mehrzweck**-klassifikation
 - **Mortalität, Morbidität, Primärversorgung, Krankenhausversorgung, Forschung, öffentliches Gesundheitswesen...**
 - **Logisch aufgebaut & mit eindeutigem Verständnis anwendbar im Austausch zwischen den verschiedenen Anwendungsbereichen**
2. Als **internationaler** und **multilingualer** Referenz Standard für **Vergleichbarkeit von Studien** und zu Kommunikationszwecken
3. Sicherstellen, dass ICD-11 in **elektronischen Krankenakten** verwendet werden kann.
 - **ICD logisch an zugrundeliegende Terminologien und Ontologien anbinden** (z.B. SNOMED, ...)
 - **ICD Kategorien "definiert" durch "logische anwendbare Regeln"**

Ziele

- Wissenschaftlich untermauert und aktuell
- Definitionen der Kategorien
- Eignung für elektronische Arbeitsumgebung
- Eignung für die wesentlichen Anwendungsfälle
- Mehrsprachig

ICD11 Use-Cases

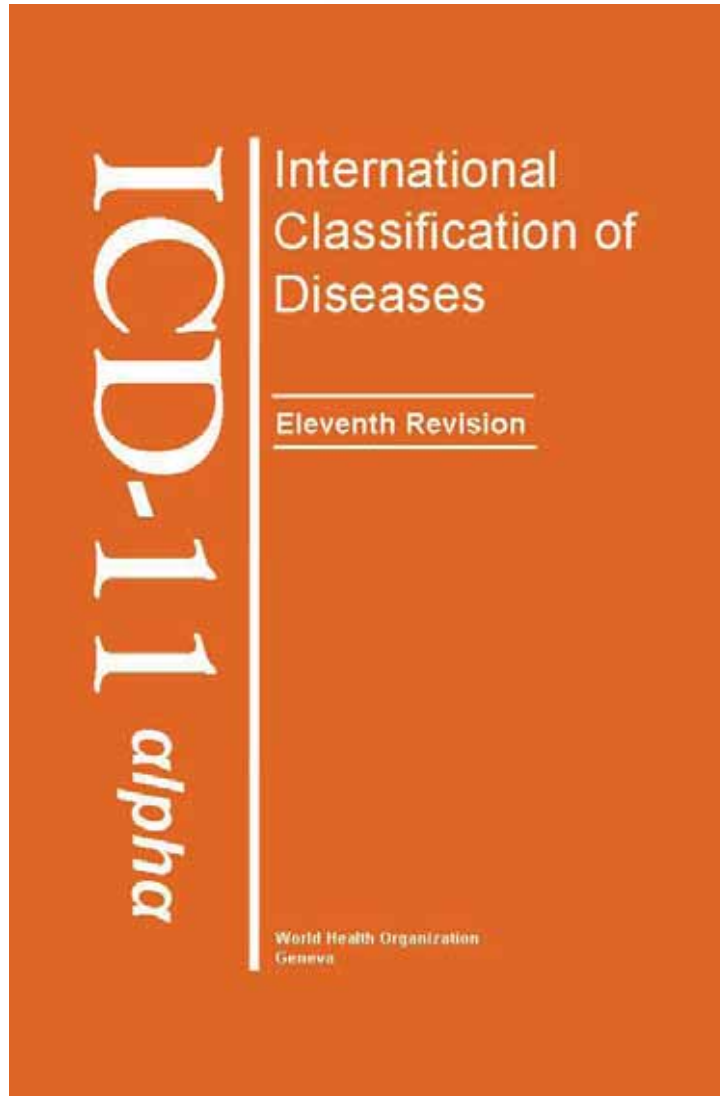
1. Mortalität
2. Morbidität
3. Case Mix Groupings
4. Primary Care = Erstversorgung ?
5. Qualität and Sicherheit
6. Wissenschaftliche Definition des klinischen Bildes

ICD-11 Zeitplan

- **2011 : Alpha version (ICD 11 alpha draft)**
 - +1 YR : Kommentare und Beratungen
- **2012 : Beta version & Version für Feldversuche**
 - +2 YR : Feldversuche
- **2014 : Öffentliche Endfassung**
–2015 : WHA Verabschiedung
- **2015+ Beginn Einführung in Mitgliedsstaaten**



ICD11 alpha



<http://www.who.int/classifications/icd/revision>

- **Alpha – Browser & Print**
10 look & feel + **descriptions – code structure !**



- **ICD-11 alpha draft is INCOMPLETE**
- **updated on a daily basis**
- **NOT TO BE USED for CODING at this stage**
- **not yet been approved by the TAGs, RSG or WHO**



Definitionen

- All ICD entities will have **definitions**:
 - key descriptions of the **meaning** of the category
 - in human readable terms – to **guide users**
 - *Limited definition in Print Version – 100 words*
 - *Detailed definitions ONLINE*
- Definitions will be *compatible* with:
 - the **Content Model**
 - **Diagnostic Criteria**
 - across the **whole classification** and the versions

Definition of Disease

a set of dysfunction(s) in any of the body systems including:

- with a known pattern of signs, symptoms & findings
 - » *symptomatology - manifestations*
- probably with an underlying explanatory mechanism
 - » *etiology*
- a distinct pattern of development over time
 - » *course and outcome*
- a known pattern of response to interventions
 - » *treatment response*
- with linkage to underlying genetic factors
 - » *genotypes, phenotypes and endophenotypes*
- with linkage to interacting environmental factors

THE CONTENT MODEL

Any Category in ICD is represented by:

1. ICD Concept Title

1.1. Fully Specified Name

2. Classification Properties

2.1. Parents

2.2. Type

2.3. Use and Linearization(s)

3. Textual Definition(s)

4. Terms

4.1. Base Index Terms

4.2. Inclusion Terms

4.3. Exclusions

5. Body Structure Description

5.1. Body System(s)

5.2. Body Part(s) [Anatomical Site(s)]

5.3. Morphological Properties

6. Manifestation Properties

6.1. Signs & Symptoms

6.2. Investigation findings

7. Causal Properties

7.1. Etiology Type

7.2. Causal Properties - Agents

7.3. Causal Properties - Causal Mechanisms

7.4. Genomic Linkages

7.5. Risk Factors

8. Temporal Properties

8.1. Age of Occurrence & Occurrence Frequency

8.2. Development Course/Stage

9. Severity of Subtypes Properties

10. Functioning Properties

10.1. Impact on Activities and Participation

10.2. Contextual factors

10.3. Body functions

11. Specific Condition Properties

11.1. Biological Sex

11.2. Life-Cycle Properties

12. Treatment Properties

13. Diagnostic Criteria

WHO classifications terminology and standards¹⁴

iCAT

ICD Categories

Create Watch Search: Type search string

- ICD Categories 1 5484
 - 01 I Certain infectious and parasitic diseases 446
 - 02 II Neoplasms 308
 - 03 III Diseases of the blood and blood-forming organs and certain disorders involving th
 - 04 IV Endocrine, nutritional and metabolic diseases 1176
 - 05 V Mental and behavioural disorders 69
 - 06 VI Diseases of the nervous system 502
 - 07 VII Diseases of the eye and adnexa 2 429
 - 08 VIII Diseases of the ear and mastoid process 4
 - 09 IX Diseases of the circulatory system 28
 - 10 X Diseases of the respiratory system 27
 - 11 XI Diseases of the digestive system 361
 - 12 XII Diseases of the skin 3 1712
 - 13 XIII Diseases of the musculoskeletal system and connective tissue 133
 - 14 XIV Diseases of the genitourinary system 170
 - 15 XV Pregnancy, childbirth and the puerperium 42
 - 16 XVI Certain conditions originating in the perinatal period 28
 - 17 XVII Congenital malformations, deformations and chromosomal abnormalities 68
 - 18 XVIII Symptoms, signs and abnormal clinical and laboratory findings, not elsewhere c
 - 19 XIX Injury, poisoning and certain other consequences of external causes 7
 - 20 XX External causes of morbidity and mortality 2
 - 21 XXI Factors influencing health status and contact with health services 3
 - 22 XXII Codes for special purposes 25

Details for ICD Categories

Title & Definition Classification Properties Terms Body Structure Description Manifestation Properties Causal Properties

Temporal Properties Severity Properties Functional Properties Specific Condition Properties Treatment Diagnostic Criteria

ICD 10 Notes and Hints

ICD 10 Code ?

Sorting label

ICD Title ? ICD Categories

Definition ?

Text

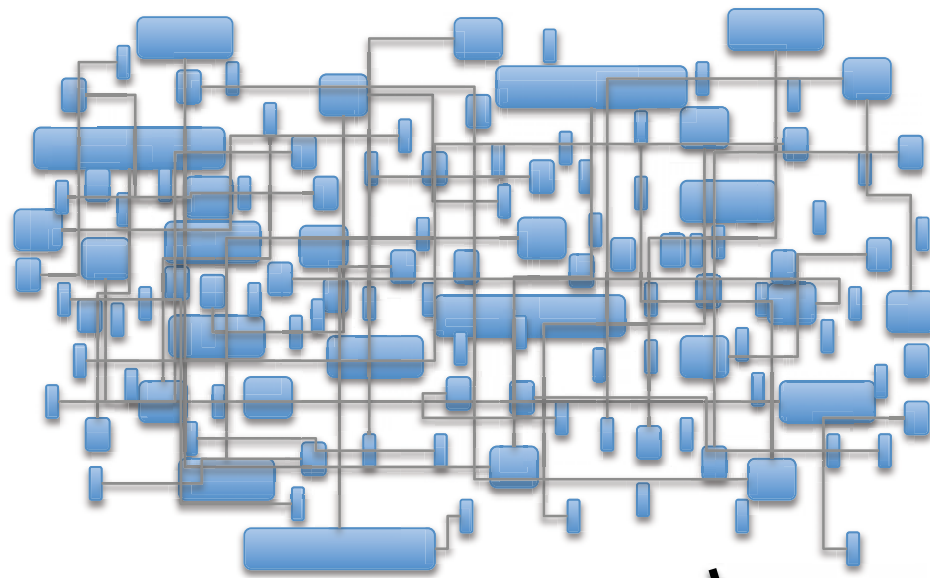
+ Add new value

External Definitions ?

Definition	CUI	Ontology ID
<input type="text"/>		

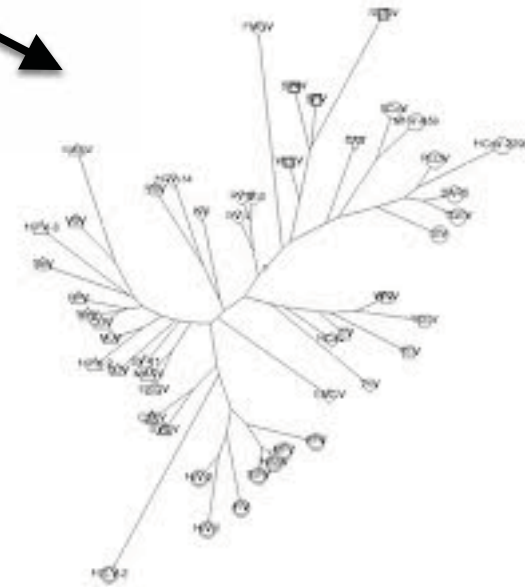
+ Add new value

Classification - Foundation or linearization?

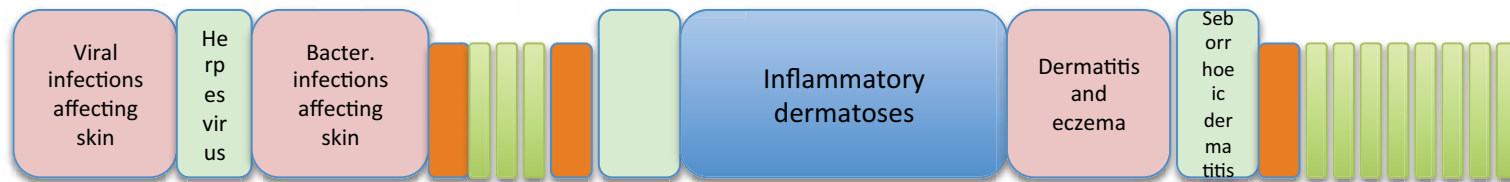


Foundation

Linearization n



Linearization 1



SNOMED : Old and Current



Former
SNOMED
Enterprise



College

American

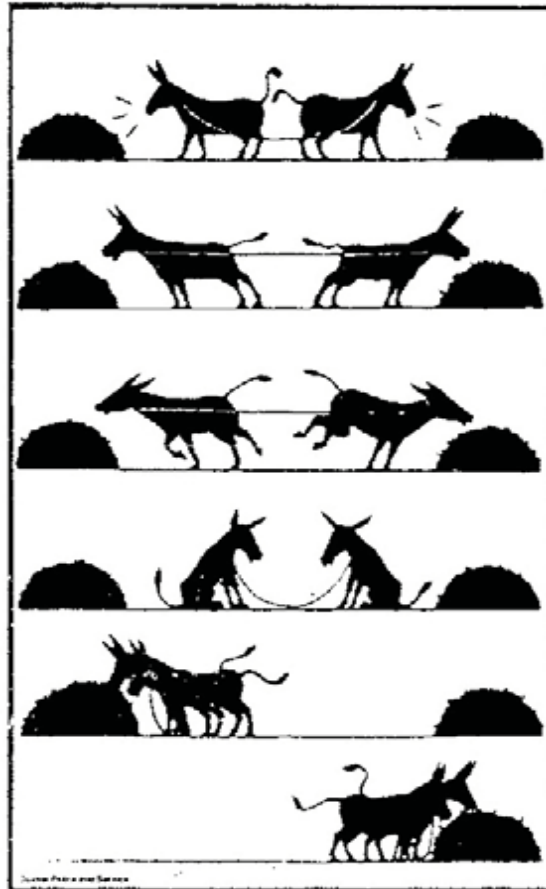
Pathologists

Network

Global

Overall Health Care

Why work together?



– WHO & IHTSDO

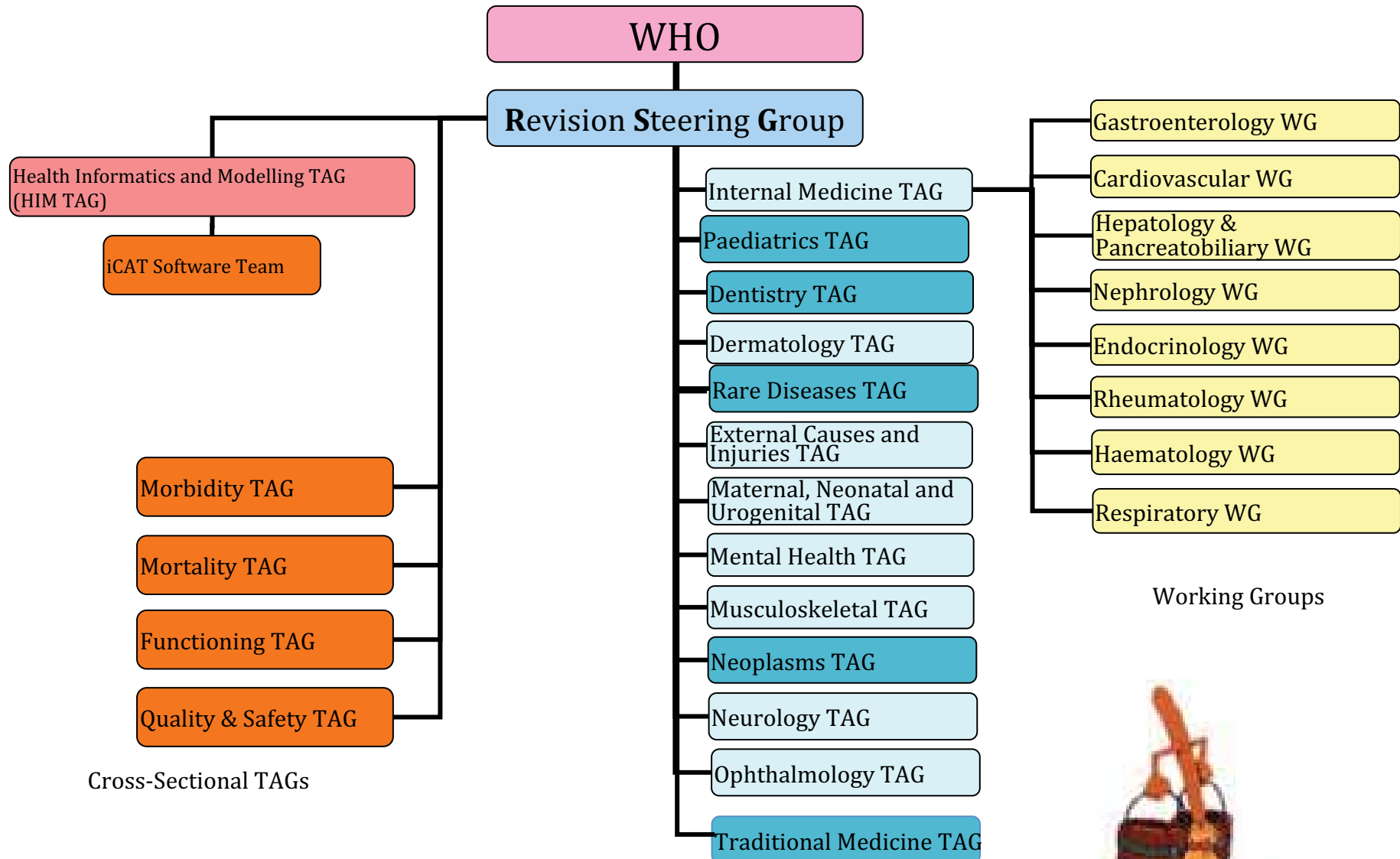
- Coverage & Adequacy
- Quality – Reliability - Utility
- MultiLingual Applicability
- Interoperability
- Sustainability

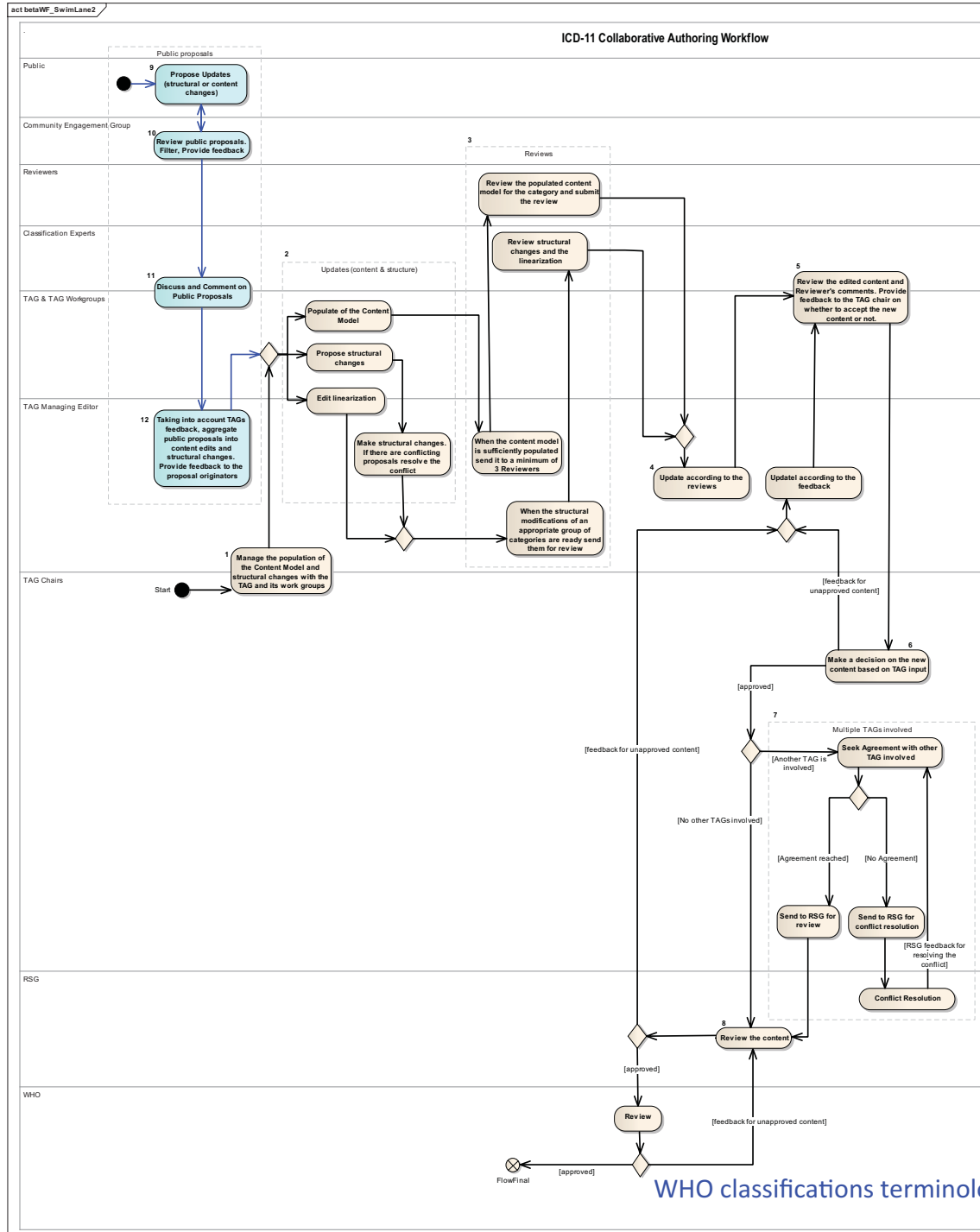
– Member States:

Enable health care delivery and compile health information

SNOMED & WHO Classifications
are **synergistic** and **not antagonistic**

ICD Revision Organizational Structure





Mehrsprachigkeit

J03.0

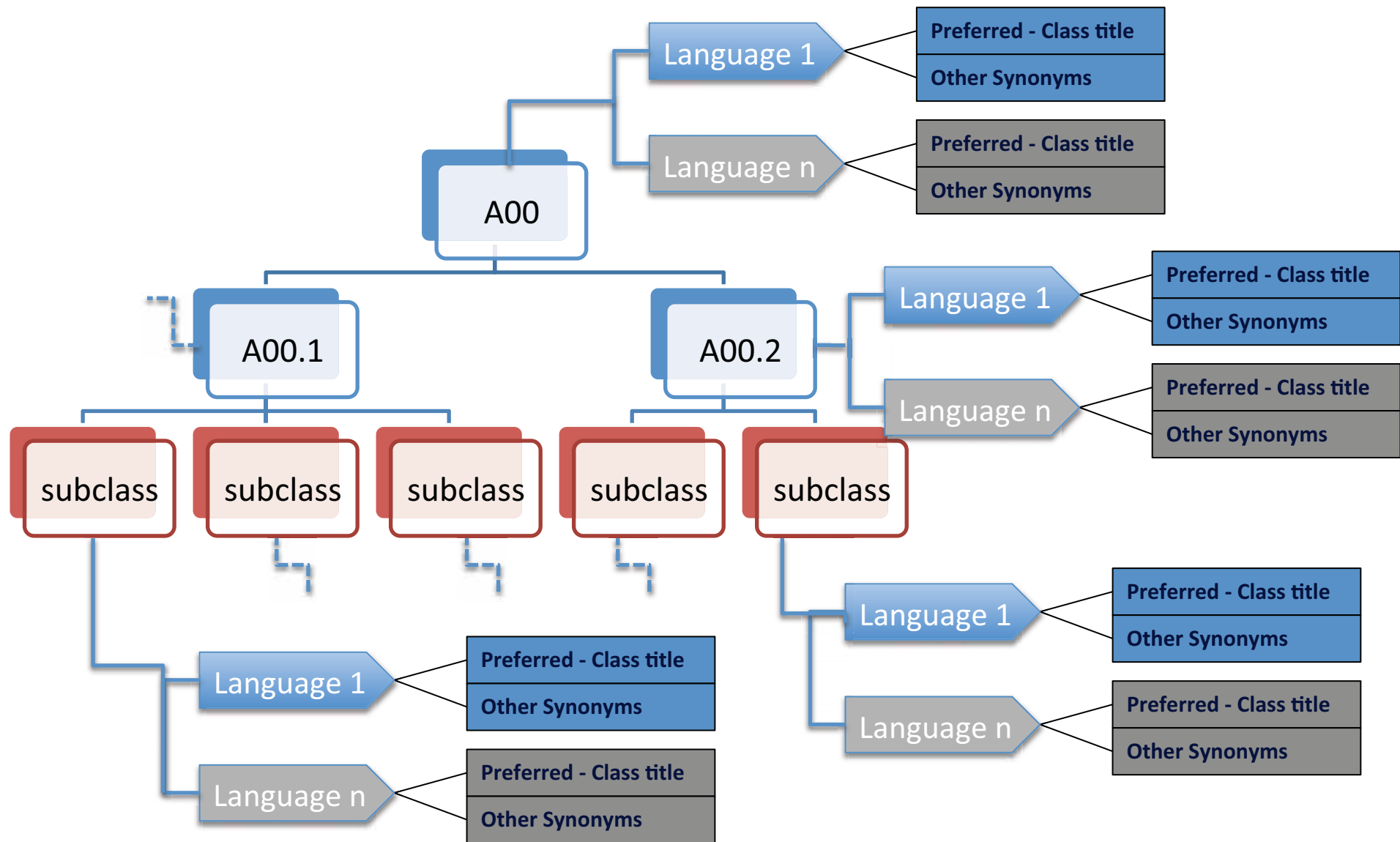
Is a category that relates to an **acute disease of the tonsil** presenting with **inflammation** caused by an **infection by beta-haemolytic streptococcus**

Streptococcal
Tonsillitis

Amygdalite à
Streptocoques

Стрептококко
вый
ТОНЗИЛЛИТ

链球菌性扁桃
体炎



Cholera	الهَيْضَنَة [الكوليرا]	霍乱	Холера
Typhoid and paratyphoid fevers	الْحُمَّى التَّيْفُودِيَّة [التيفوئيدية] والْحُمَّى نظيرة التَّيْفُودِيَّة [الباراتيفوئيدية]	伤寒和副伤寒	Тиф и паратиф
Paratyphoid fever B	الْحُمَّى نظيرة التَّيْفُودِيَّة (الباراتيفوئيدية)	副伤寒乙	Паратиф В
Paratyphoid fever, unspecified	الْحُمَّى نظيرة التَّيْفُودِيَّة (الباراتيفوئيدية)، غير الْمُعَيَّنَة	未特指的副伤寒	Паратиф неуточненный
Other salmonella infections	عَدَاوَى أُخْرَى بِالسَّلْمُونِيَّات	其他沙门氏菌感染	Другие сальмонеллезные инфекции
Salmonella enteritis	السَّلْمُونِيَّات المُؤَهَبَة لِلْأَمْعَاء	沙门氏菌肠炎	Сальмонеллезный энтерит
Salmonella septicaemia	إِنْتَانٌ دَمَوِيٌّ (سپتيسيميا) بِالسَّلْمُونِيَّات	沙门氏菌败血症	Сальмонеллезная септицемия
Salmonella infection, unspecified	عَدَاوَى بِالسَّلْمُونِيَّات، غير مُعَيَّنَة	未特指的沙门氏菌感染	Сальмонеллезная инфекция неуточненная
Shigellosis due to Shigella dysenteriae	دَاءُ الشَّيْجِيَّاتِ النَّاجِمِ عَنِ الشَّيْجِيَّاتِ الزُّحَارِيَّة	由于志贺痢疾杆菌引起的志贺菌病	Шигеллез, вызванный Shigella dysenteriae
Shigellosis due to Shigella flexneri	دَاءُ الشَّيْجِيَّاتِ النَّاجِمِ عَنِ الشَّيْجِيَّاتِ الْفَلْخَمِينَرِيَّة	由于弗氏志贺菌引起的志贺菌病	Шигеллез, вызванный Shigella flexneri
Shigellosis due to Shigella boydii	دَاءُ الشَّيْجِيَّاتِ النَّاجِمِ عَنِ الشَّيْجِيَّاتِ الْبُودِيَّة	由于波伊德志贺菌引起的志贺菌病	Шигеллез, вызванный Shigella boydii
Shigellosis due to Shigella sonnei	دَاءُ الشَّيْجِيَّاتِ النَّاجِمِ عَنِ الشَّيْجِيَّاتِ السُّونِيَّة	由于宋内志贺菌引起的志贺菌病	Шигеллез, вызванный Shigella sonnei

Postkoordinierung

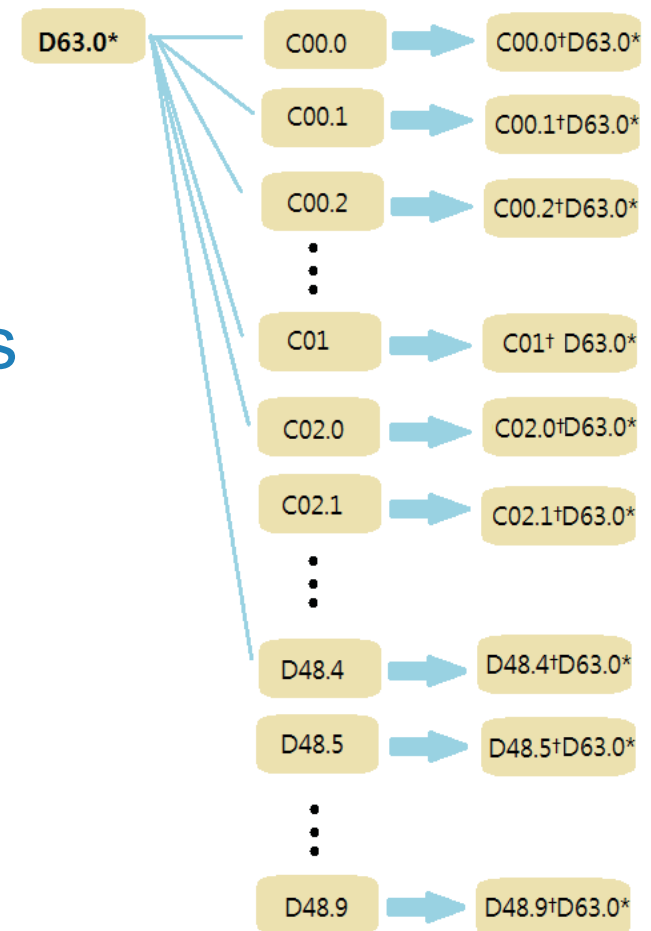


Kreuz-Stern und Postkoordinierung

D 63.0 *

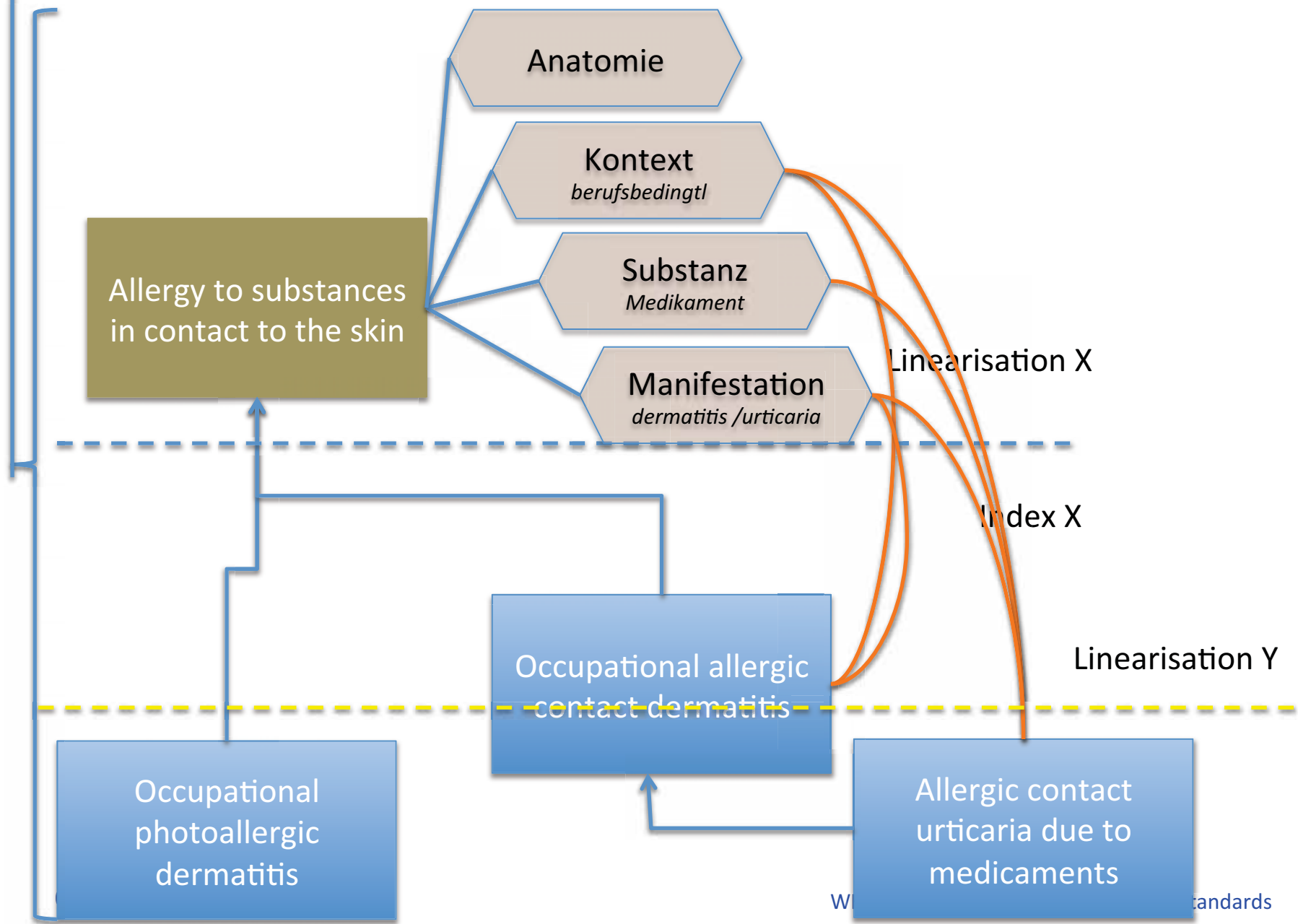
Anaemia in neoplastic disease

is to be used together with codes
in the range C00-D48 †.



Foundation

Postkoordinierung - MehrfachverschLüsselung

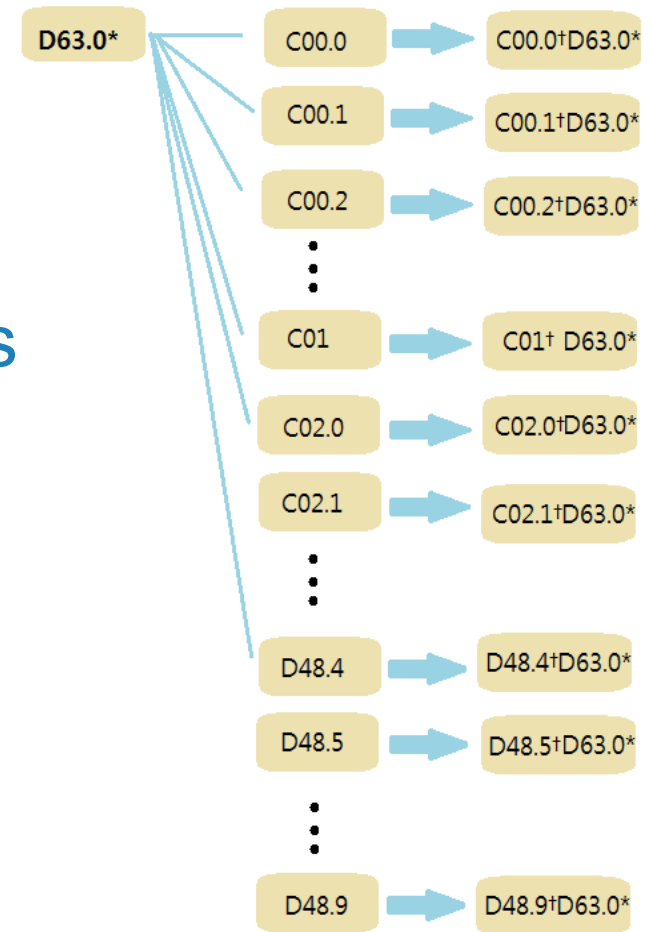


Kreuz-Stern

D 63.0 *

Anaemia in neoplastic disease

is to be used together with codes
in the range C00-D48 †.



iCAT

...

99 Supplementary codes

A Supplementary manifestations

06 F 03 Cranial nerve disorders classified elsewhere

06 F 05 Nerve root and plexus compressions in diseases classified elsewhere

AA Direct infections of joint

AA3 Disorders of conjunctiva in diseases classified elsewhere

AD7 Cataract and other disorders of lens in diseases classified elsewhere

B00.52 Disorders of sclera and cornea in diseases classified elsewhere

BCh Retinal disorders in diseases classified elsewhere

C M63.0 Myositis in bacterial diseases classified elsewhere

D M63.1 Myositis in protozoal and parasitic infections classified elsewhere

D63 Anaemia in chronic diseases classified elsewhere

D63.0 Anaemia in neoplastic disease

D63.1 Anaemia in chronic kidney disease

D63.8 Anaemia in other chronic diseases classified elsewhere

Parents of D63.0 Anaemia in neoplastic disease

D63 Anaemia in chronic diseases classified elsewhere

04/05/2012 GMDS 28

Uuu Manifestations in neoplasms

WHO classifications terminology and standards

Details for D63.0 Anaemia in neoplastic disease



Title & Definition	Classification Properties	Terms	Clinical Description	Manifestation Properties	Causal Properties	Temporal Properties
		Severity Properties	Functioning Properties	Specific Condition Properties	Treatment	Diagnostic Criteria
ICD 10 Notes and Hints	Editorial Information					

Type

- Disease
- Disorder/Syndrome
- Exposure to External Causes
- Injuries
- Sign/Symptom
- Reason for Encounter
- Unspecified

Use ?

Linearization	Is part of?	Is grouping?	Sorting label	Linearization Parent	
01 Morbidity	<input checked="" type="checkbox"/>	<input type="checkbox"/>		D63 Anaemia in chronic diseases classified elsewhere	
02 Mortality	<input checked="" type="checkbox"/>	<input type="checkbox"/>		D63 Anaemia in chronic diseases classified elsewhere	
03 Primary Care	<input checked="" type="checkbox"/>	<input type="checkbox"/>		D63 Anaemia in chronic diseases classified elsewhere	
04 Research	<input checked="" type="checkbox"/>	<input type="checkbox"/>		D63 Anaemia in chronic diseases classified elsewhere	
05 Spec. Adapt: Mental Health	<input checked="" type="checkbox"/>	<input type="checkbox"/>		D63 Anaemia in chronic diseases classified elsewhere	

Alpha Browser

Morbidity linearization

25 Supplementary codes

25A Supplementary manifestations

25A00 Cranial nerve disorders classified elsewhere

25A01 Nerve root and plexus compressions in diseases classified elsewhere

25A02 Disorders of conjunctiva in diseases classified elsewhere

25A03 Cataract and other disorders of lens in diseases classified elsewhere

25A04 Disorders of sclera and cornea in diseases classified elsewhere

25A05 Retinal disorders in diseases classified elsewhere

25A06 Myositis in bacterial diseases classified elsewhere

25A07 Myositis in protozoal and parasitic infections classified elsewhere

25A08 Anaemia in chronic diseases classified elsewhere

[25A08.00 Anaemia in neoplastic disease](#)

25A08.01 Anaemia in chronic kidney disease

25A08.02 Anaemia in other chronic diseases classified elsewhere

Alpha Browser

Foundation component

Neoplasms

U85 Resistance to antineoplastic drugs

Manifestations in neoplasms

Paraneoplastic dermatomyositis

Anaemia in neoplastic disease

Systemic atrophies primarily affecting the
central nervous system

Lambert-Eaton syndrome

Zusätzliche Kategorien

Examples for generic manifestation

“XXX in diseases classified elsewhere”

G22*

Parkinsonism in diseases classified elsewhere










Syphilitic parkinsonism (A52.1+)

There can be other diseases besides Syphilitic parkinsonism thus a large number of combinations are possible.

Solution:

1. Additional child “Syphilitic parkinsonism” at A52.1
2. Move G22* to supplementary manifestations in supplementary code chapter.

Resolving Dagger asterisk combinations...

- [-] ● B65.3 Cercarial dermatitis  1  16
- Cercarial dermatitis with fibrosis of spleen  2
- Cercarial dermatitis with pulmonary heart disease  2
- Glomerular disorders in cercarial dermatitis  2
- Granuloma of brain due to cercarial dermatitis  2
- Hepatosplenic manifestations in cercarial dermatitis  2
- Oesophageal varices with bleeding in cercarial dermatitis 
- Oesophageal varices without bleeding in cercarial dermatitis
- Pneumonia in cercarial dermatitis  2

Kontext der Internationalen Klassifikationen



Visual Impairment and Blindness

ICD - ICF

H54 VISUAL DEFICITS

A visual deficit may be a congenital **lack** or an acquired **loss** of vision.

H54.0

■ Deficits of FUNCTIONAL VISION (of **the person**)

*Includes un(der)corrected refractive errors.
(Corresponds to H54 **after** 2010 edition).*

Functional vision describes how the **person** lives.

It estimates the **burden** of vision loss. It is measured with **both eyes open**, with **presenting correction**.

■ VISUAL IMPAIRMENTS (of **each eye**)

*Excludes un(der)corrected refractive errors.
(Corresponds to H54 **before** 2010 revision).*

Visual impairments describe how **each eye** functions. They serve to detect **eye disease**.

They are measured for **each eye separately** with **best-corrected** vision.

H54.1 Impairment of VISUAL ACUITY

H54.2 Impairment of VISUAL FIELD

H54.3 VISUAL DYSFUNCTION

(disorders of higher cerebral visual functions)

ICD

H54.- Visual impairment including blindness (binocular or monocular)

Note: For definition of visual impairment categories see table below.

Excludes: amaurosis fugax (G45.3)

H54.0 Blindness, binocular
Visual impairment categories 5

H54.1 Severe visual impairment, binocular
Visual impairment category 2

H54.2 Moderate visual impairment, binocular
Visual impairment category 1

H54.3 Mild or no visual impairment, binocular
Visual impairment category 0

H54.4 Blindness, monocular
Visual impairment categories 3, 4, 5 in one eye and categories 0, 1, 2 or 9 in the other eye

H54.5 Severe visual impairment, monocular
Visual impairment category 2 in one eye and categories 0, 1 or 9 in other eye

H54.6 Moderate visual impairment, monocular
Visual impairment category 1 in one eye and categories 0 or 9 in other eye

H54.9 Unspecified visual impairment (binocular)
Visual impairment category 9

Category	Presenting distance visual acuity	
	Worse than:	Equal to or better than:
Mild or no visual impairment 0		6/18 3/10 (0.3) 20/70
Moderate visual impairment 1	6/18 3/10 (0.3) 20/70	6/60 1/10 (0.1) 20/200
Severe visual impairment 2	6/60 1/10 (0.1) 20/200	3/60 1/20 (0.05) 20/400
Blindness 3	3/60 1/20 (0.05) 20/400	1/60* 1/50 (0.02) 5/300 (20/1200)
Blindness 4	1/60* 1/50 (0.02) 5/300 (20/1200)	Light perception
Blindness 5	No light perception	
9	Undetermined or unspecified	

ICD-11 proposal

00- Disorders of Visual Functions

(It is assumed that Right eye/Left eye will be recorded in a separate database field.)

- 001 Vision with both eyes open – Visual Acuity loss
- 002 Vision with both eyes open – Visual Field loss
- 003 Monocular Vision – Visual Acuity loss, lesser eye
- 004 Monocular Vision – Visual field loss patterns
- 005 Loss of Contrast vision
- 006 Illumination preferences
- 007 Color vision
- 008 Disorders of Binocular vision
- 009 Subjective experiences
- 010 Disorders of higher (cognitive) visual functions
- 011 Electrophysiologic functions

ICF – Body Functions

b210 Seeing functions

 b2100 Visual acuity functions

 b21000 Binocular acuity of distant vision

 b21001 Monocular acuity of distant vision

 b21002 Binocular acuity of near vision

 b21003 Monocular acuity of near vision

 b21008 Visual acuity functions, other specified

 b21009 Visual acuity functions, unspecified

 b2101 Visual field functions

 b2102 Quality of vision

 b21020 Light sensitivity

 b21021 Colour vision

 b21022 Contrast sensitivity

 b21023 Visual picture quality

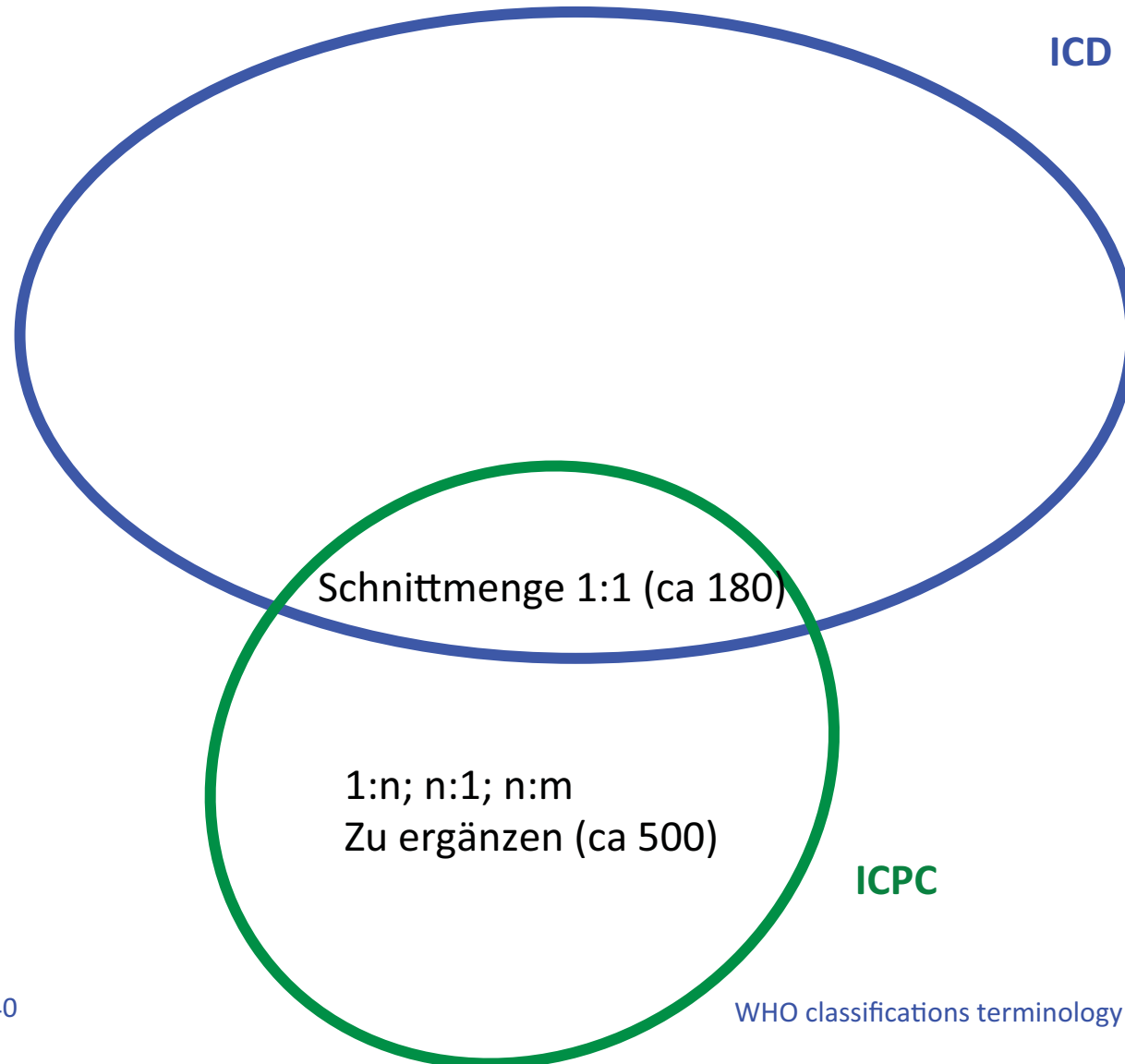
 b21028 Quality of vision, other specified

 b21029 Quality of vision, unspecified

 b2108 Seeing functions, other specified

 b2109 Seeing functions, unspecified

ICPC-ICD



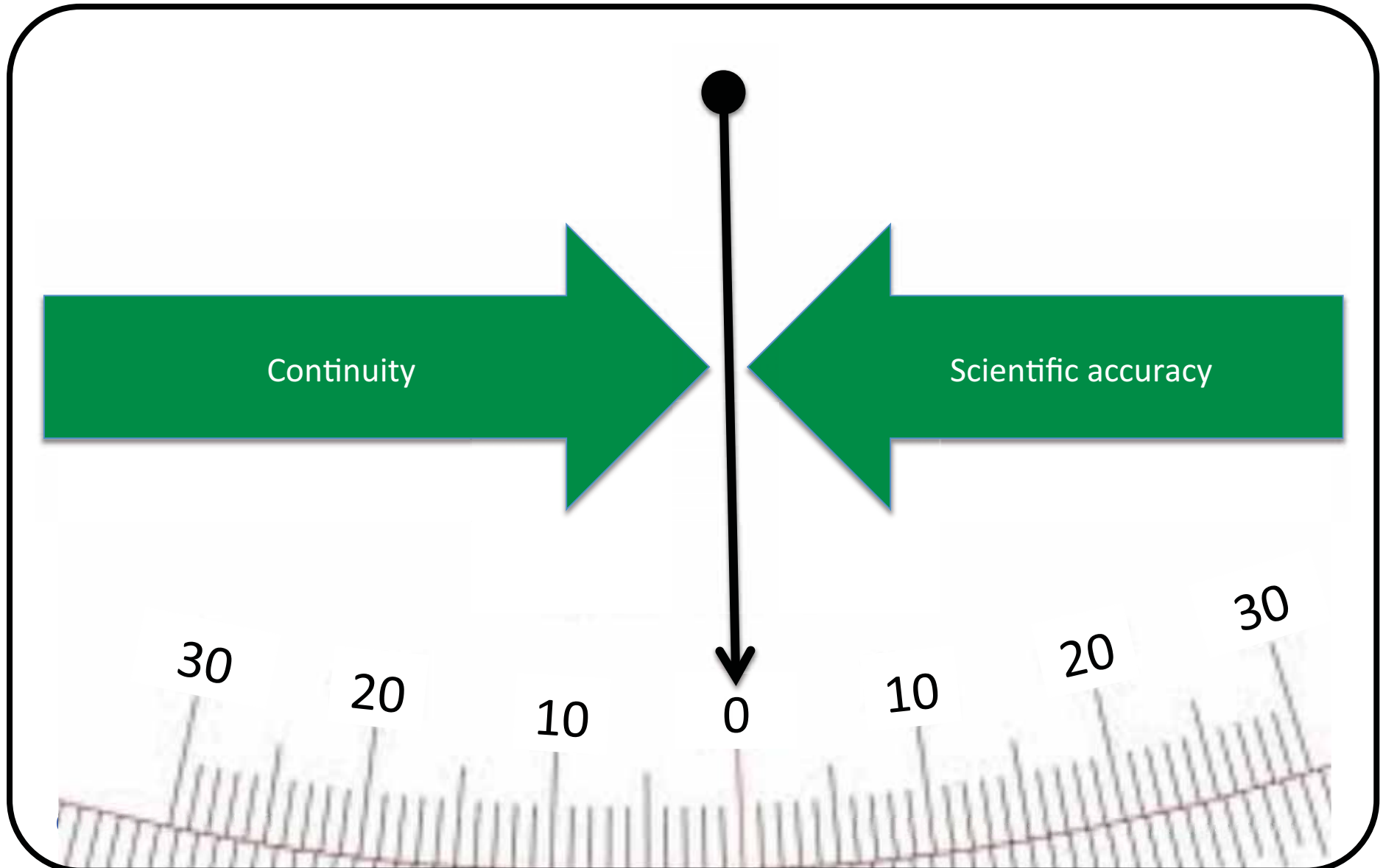
Weiterer Abgleich

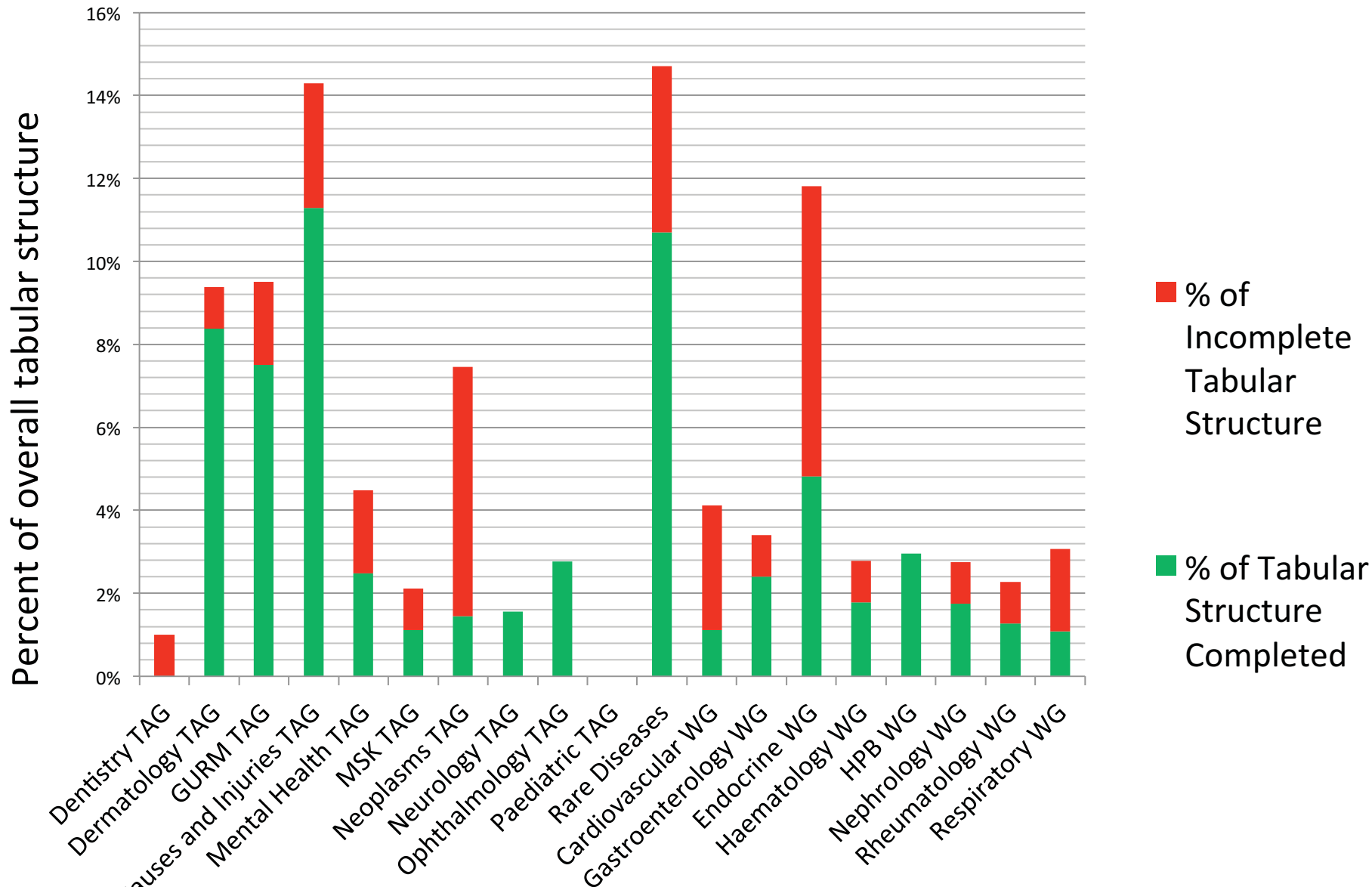
- ICD-10 Aktualisierungen
 - International
 - Nationale klinische Modifikationen
- ICD-O-3 Aktualisierungen (für 1.1.2011)
- Definitionen der “Blue Books” Klassifikation der Tumoren
- ICPC-2 ICPC-3 (Entwicklung in gemeinsamer Absprache)

Status quo



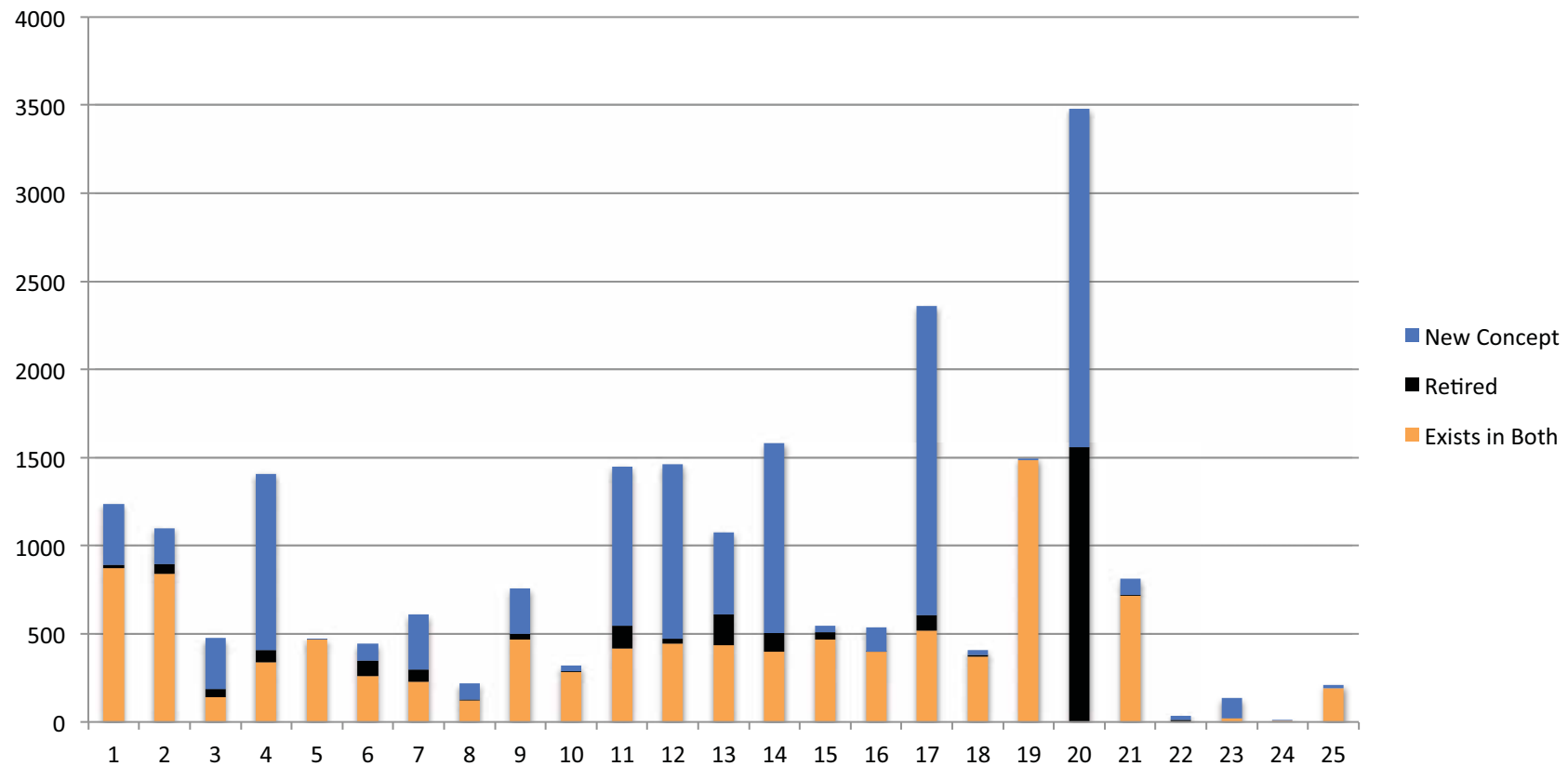
Balance





Topic Advisory Group Progress on Tabular Structure

New, Retired, & Unchanged ICD Concepts as of 24 May 2011



Gute Neuigkeiten



- **“Alpha” has proven feasible**
 - Continuity: respectful to **ICD traditions** – **break** with non-essential features
 - Content Model proves useful & relevant
- **Computerization is feasible**
- **Unprecedented linkage possibilities to:**
 - **SNOMED CT**
 - **ICF**
 - other **WHOFIC and UN Family of Classifications**
 - other ontology, terminology and standard sources (**QSM, TM, ICPS...**)
- **Better Multilingual Production opportunities**

NICHT so gute Neuigkeiten



- **Below expected targets yet**
 - < 80% definitions
 - < 20% content model
- **Not all TAGs are at similar development stage**
- **Engagement of international Stakeholders**



Ausblick



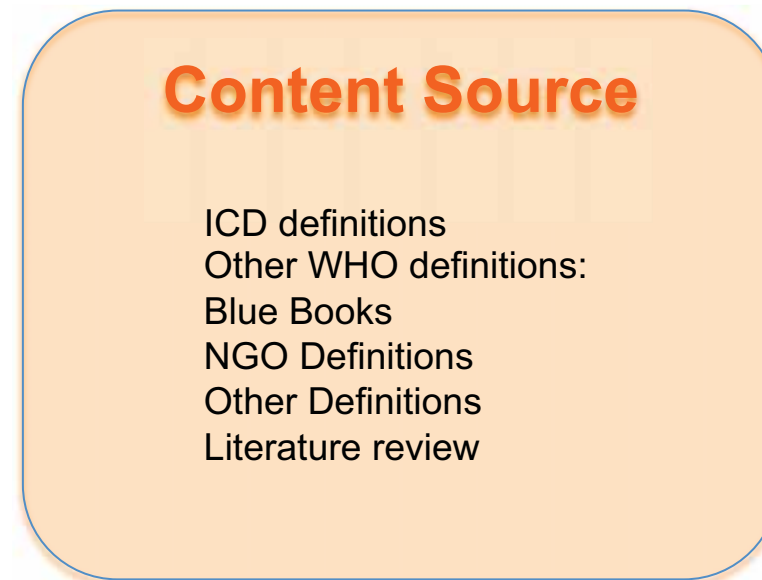
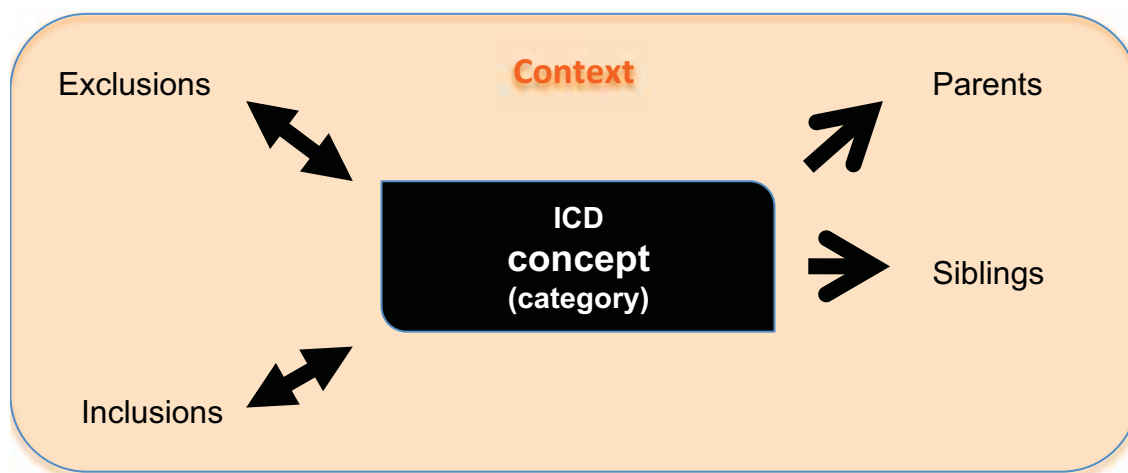
Korrekturen-Der Zauberlehrling

“ICD-11 Entwürfe”



***Oh mein Entwurf,
I befehle Dir:***

- *Verwende ICD-10 Klassen*
- *Keine Abkürzungen*
- *Beachte die Rechtschreibung*
- *Keine Ueberschneidungen*
- *Setze den Aufzweigungen Grenzen*
- *Verwende einheitliche Begriffe*



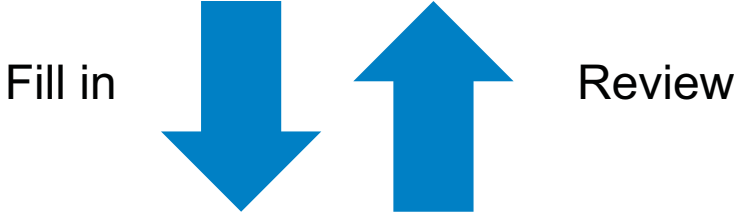
Textual Definition

1. concise
2. extensive

- Definitions should be:
- Clear, understandable
 - Internationally valid

Definitions should be:
•Clear, understandable
•Internationally valid

Textual Definition
1. concise
2. extensive



Diagnostic
Criteria

- Body Structure Description
- Manifestation Properties
- Causal Properties
- Temporal Properties
- Severity Properties
- Functioning Properties
- Treatment Properties

Kommentierung **Alpha** und **Beta**

Inhalte:

Definitionen

Position eines Konzeptes in einer
Linearisation

Abgleich mit verwandten Klassifikationen

Wer:

Experten



Alpha browser- Definitionen empfehlen

ICD11 Alpha

Jun 20 - 11:02 UTC

can celik [Log Off]

Search

[? \[Advanced Search\]](#)

Foundation

Linearizations

User

Info



ICD11 Alpha

- ▶ **Certain infectious and parasitic diseases**
- ▶ **Neoplasms**
- ▶ **Diseases of the blood and blood-forming organs and certain disorders involving the immune mechanism**
- ▶ **Endocrine, nutritional and metabolic diseases**
- ▶ **Mental and behavioural disorders**
- ▶ **Diseases of the nervous system**
- ▶ **Diseases of the eye and adnexa**
- ▶ **Diseases of the ear and mastoid process**
- ▶ **Diseases of the circulatory system**
- ▶ **Diseases of the respiratory system**
- ▶ **Diseases of the digestive system**
- ▶ **Diseases of the skin**
- ▶ **Diseases of the musculoskeletal system and connective tissue**
- ▶ **Diseases of the genitourinary system**
- ▶ **Pregnancy, childbirth and the puerperium**
- ▶ **Certain conditions originating in the perinatal period**
- ▶ **Developmental anomalies**
- ▶ **Symptoms, signs and abnormal clinical and laboratory findings, not elsewhere classified**
- ▶ **Injury, poisoning and certain other consequences of external causes**
- ▶ **External causes of morbidity and mortality**
- ▶ **Factors influencing health status and contact with health services**
- ▶ **Codes for special purposes**
- ▶ **Special tabulation lists for mortality and morbidity**
- ▶ **Multisystem diseases**
- ▶ **Supplementary information**

ID : <http://who.int/icd#V>

Mental and behavioural disorders

Parent(s)

- Selected Cause is All other diseases in the Condensed Infant and child mortality list
- Selected cause is Mental and behavioural disorders

Definition

This entity does not have a definition at the moment. Click to suggest a definition

Inclusions

- disorders of psychological develo

Exclusions

- symptoms, signs and abnormal c

Help us!

Suggested definition

Source of definition

Kommentierung Alpha und **Beta**

Inhalte:

Definitionen

Position eines Konzeptes in einer
Linearisation

Abgleich mit verwandten Klassifikationen

Wer:

Interessierte Öffentlichkeit



ICD-11 Zeitplan

- **2011 : Alpha version (ICD 11 alpha draft)**
 - +1 YR : Kommentare und Beratungen
- **2012 : Beta version & Version für Feldversuche**
 - +2 YR : Feldversuche
- **2014 : Öffentliche Endfassung**
–2015 : WHA Verabschiedung
- **2015+ Beginn Einführung in Mitgliedsstaaten**



Alles will die ICD

